



Company : Apache Energy Ltd

Well : Wasabi-1

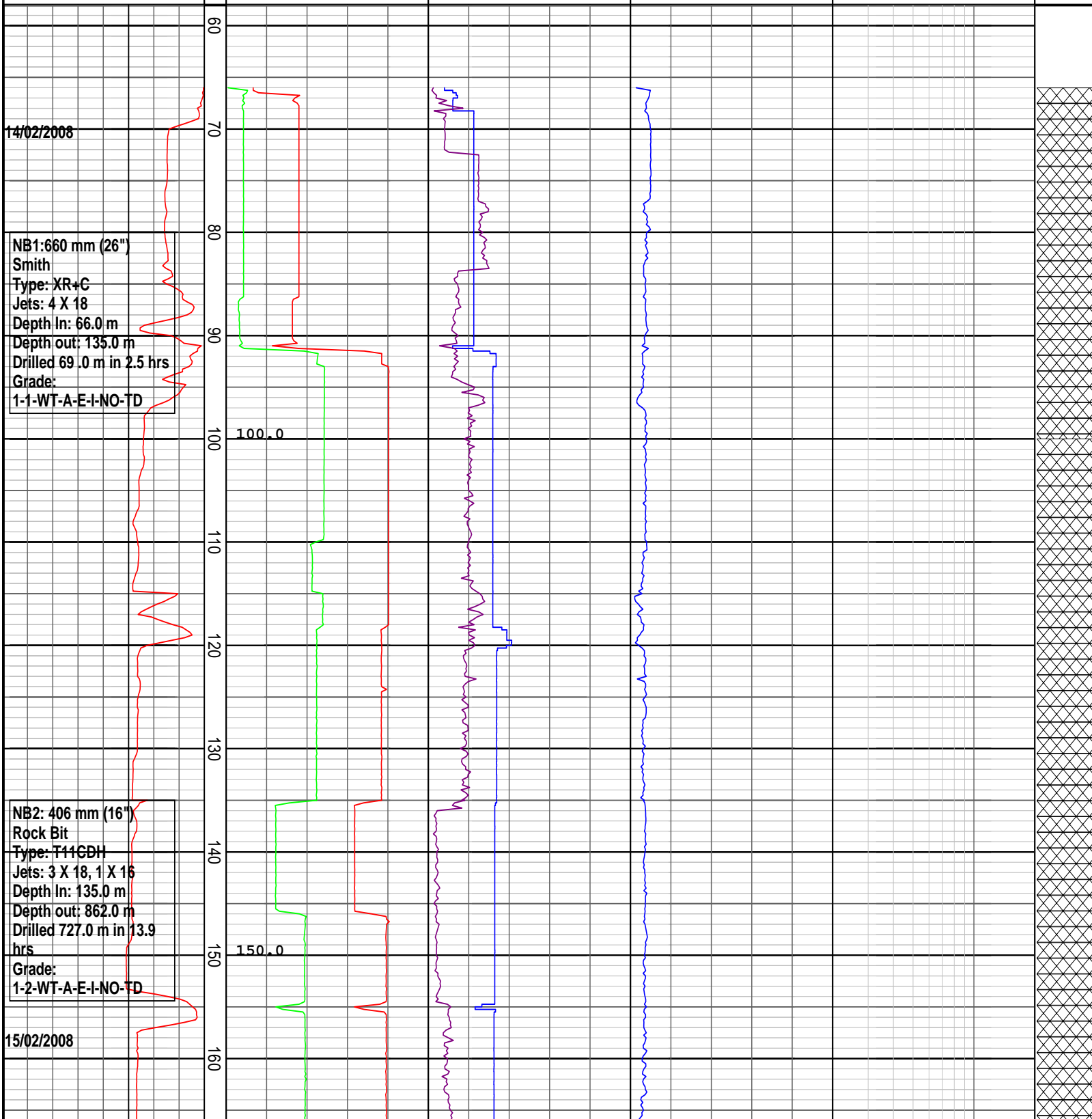
Interval : 58.00 - 943.23 meters

Created : 23/Feb/2008 7:49:56 AM

INTEQ

DRILLING DATA PLOT

ROP (m/hr) 200 175 150 125 100 75 50 25	FLOW IN (gpm) 300 600 900 1200 1500	RPM Avg 50 100 150 200 250	TORQUE Avg (kft-lb) 5 10 15 20 25	DXC 0.2	2	INTERPRETED LITHOLOGY
MD meters : 500	STANDPIPE (psi) 1000 2000 3000 4000 5000	WOB Avg (klbs) 8 16 24 32 40				
	VDEPTH					

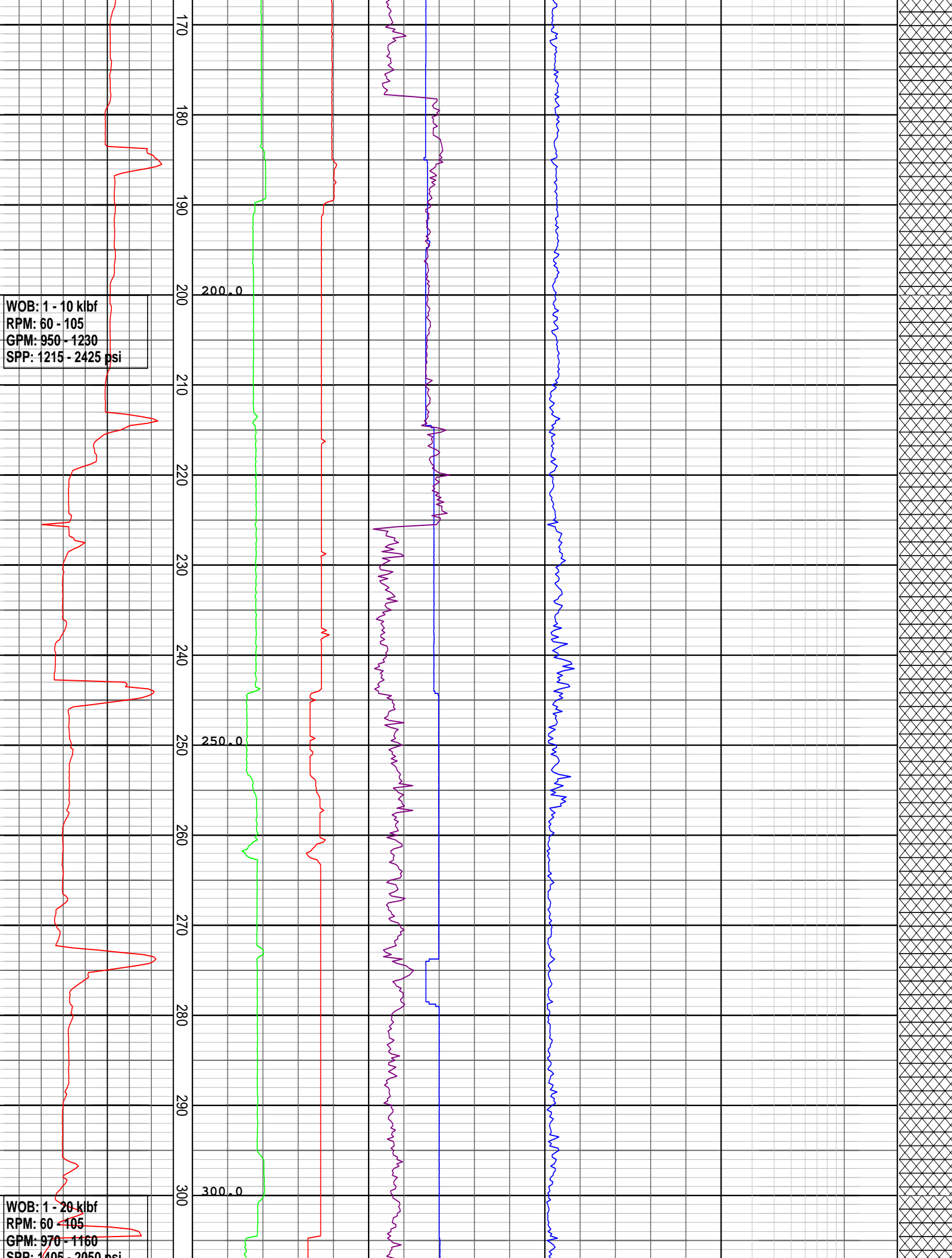


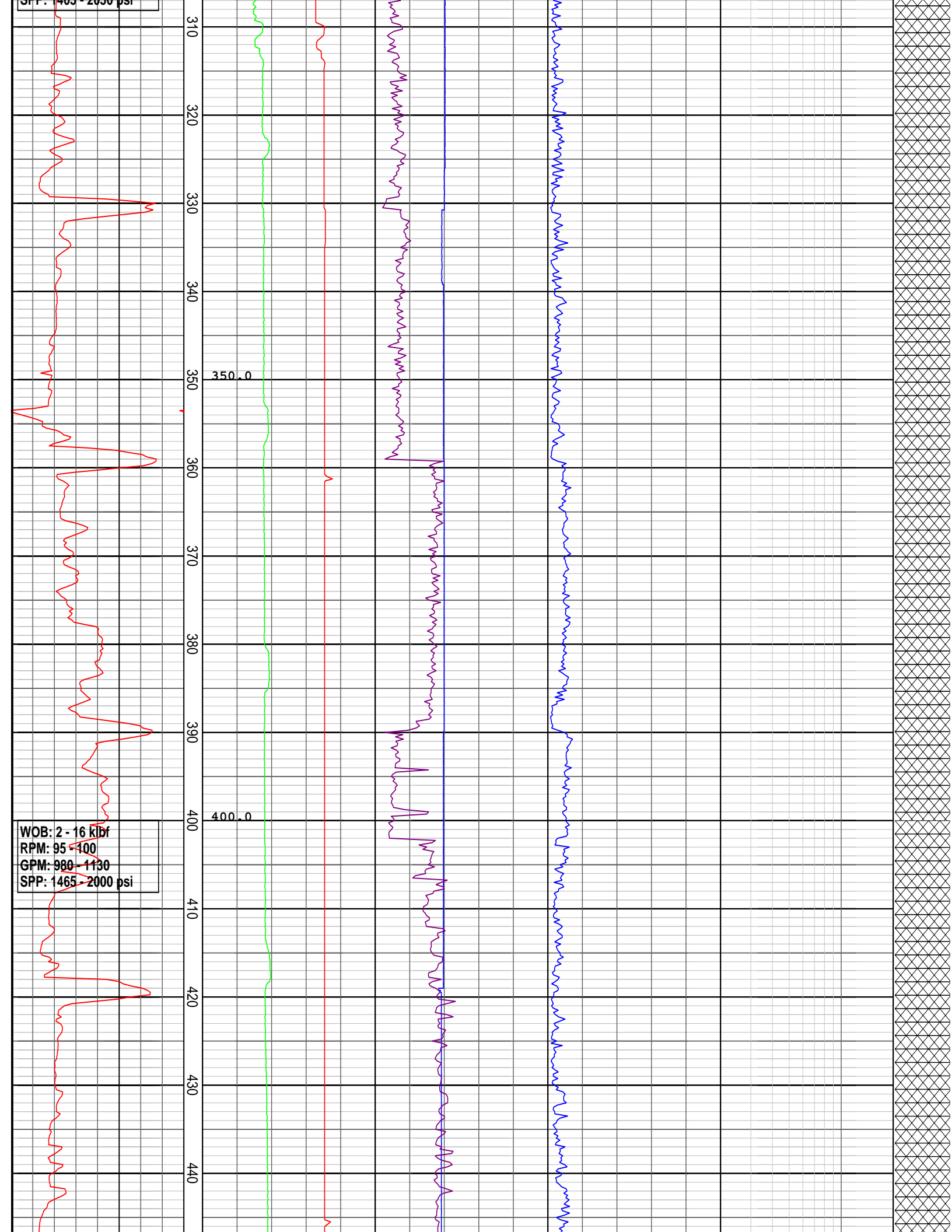
14/02/2008

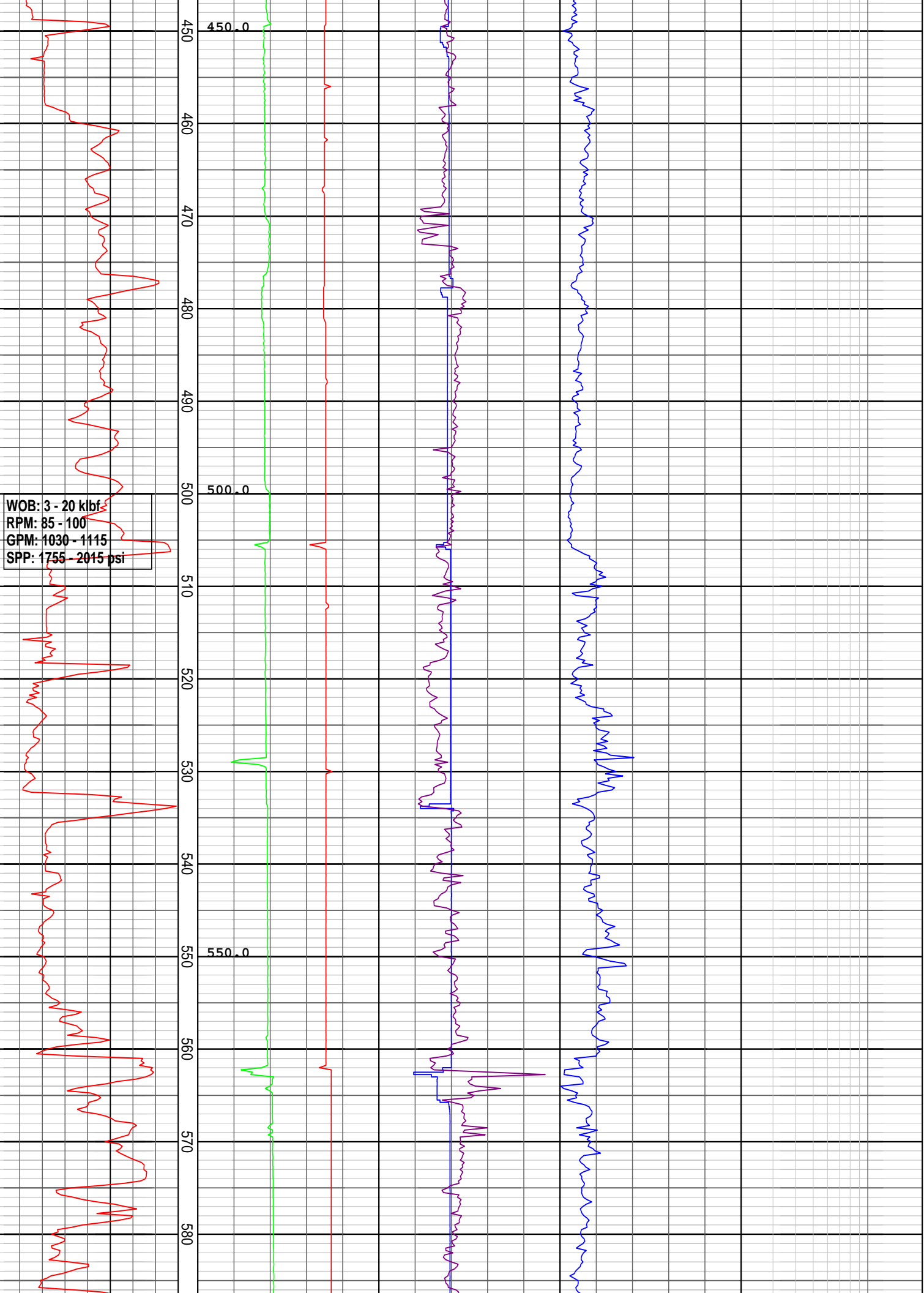
NB1: 660 mm (26")
 Smith
 Type: XR+C
 Jets: 4 X 18
 Depth In: 66.0 m
 Depth out: 135.0 m
 Drilled 69.0 m in 2.5 hrs
 Grade:
 1-1-WT-A-E-I-NO-TD

NB2: 406 mm (16")
 Rock Bit
 Type: T11GDH
 Jets: 3 X 18, 1 X 16
 Depth In: 135.0 m
 Depth out: 862.0 m
 Drilled 727.0 m in 13.9 hrs
 Grade:
 1-2-WT-A-E-I-NO-TD

15/02/2008

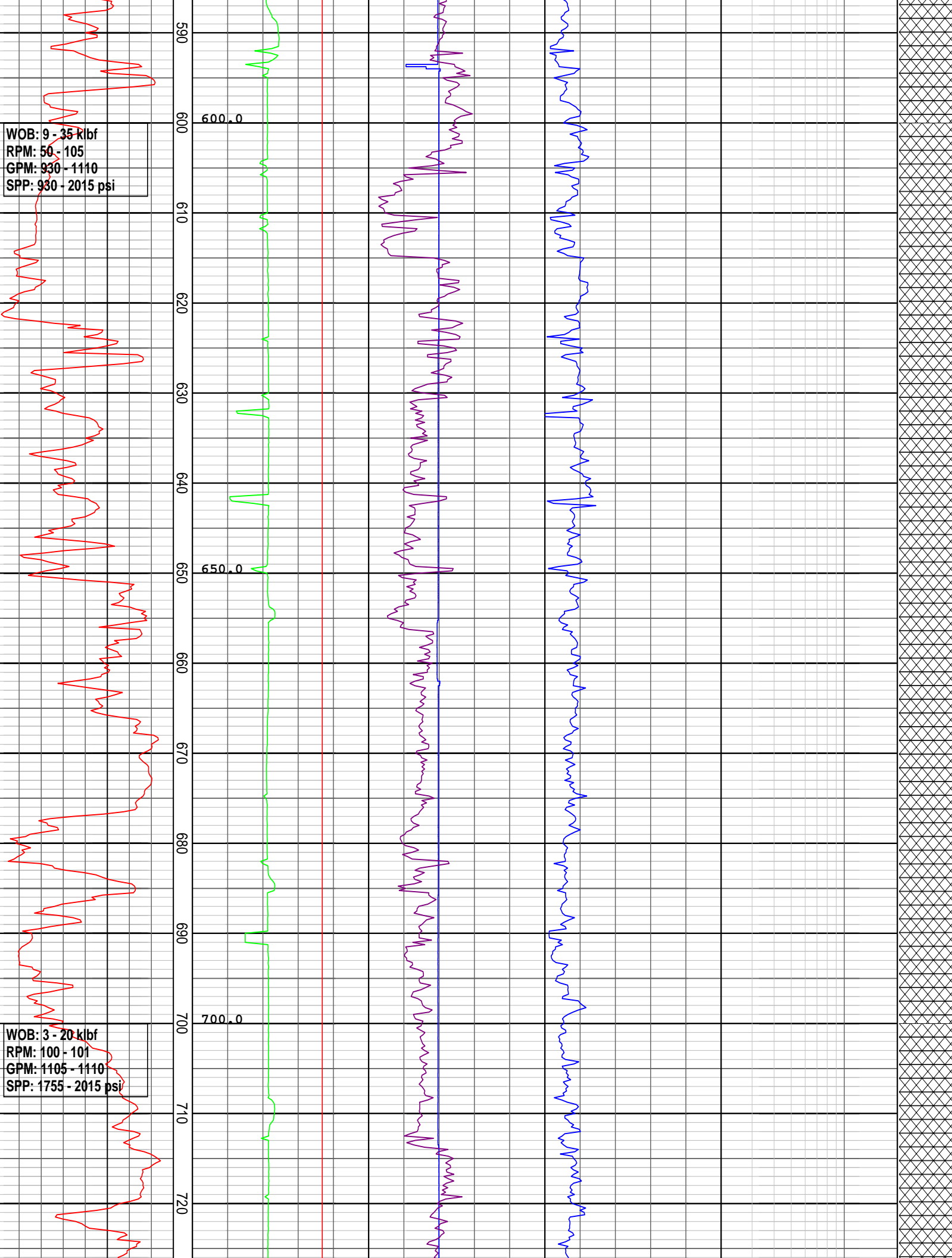


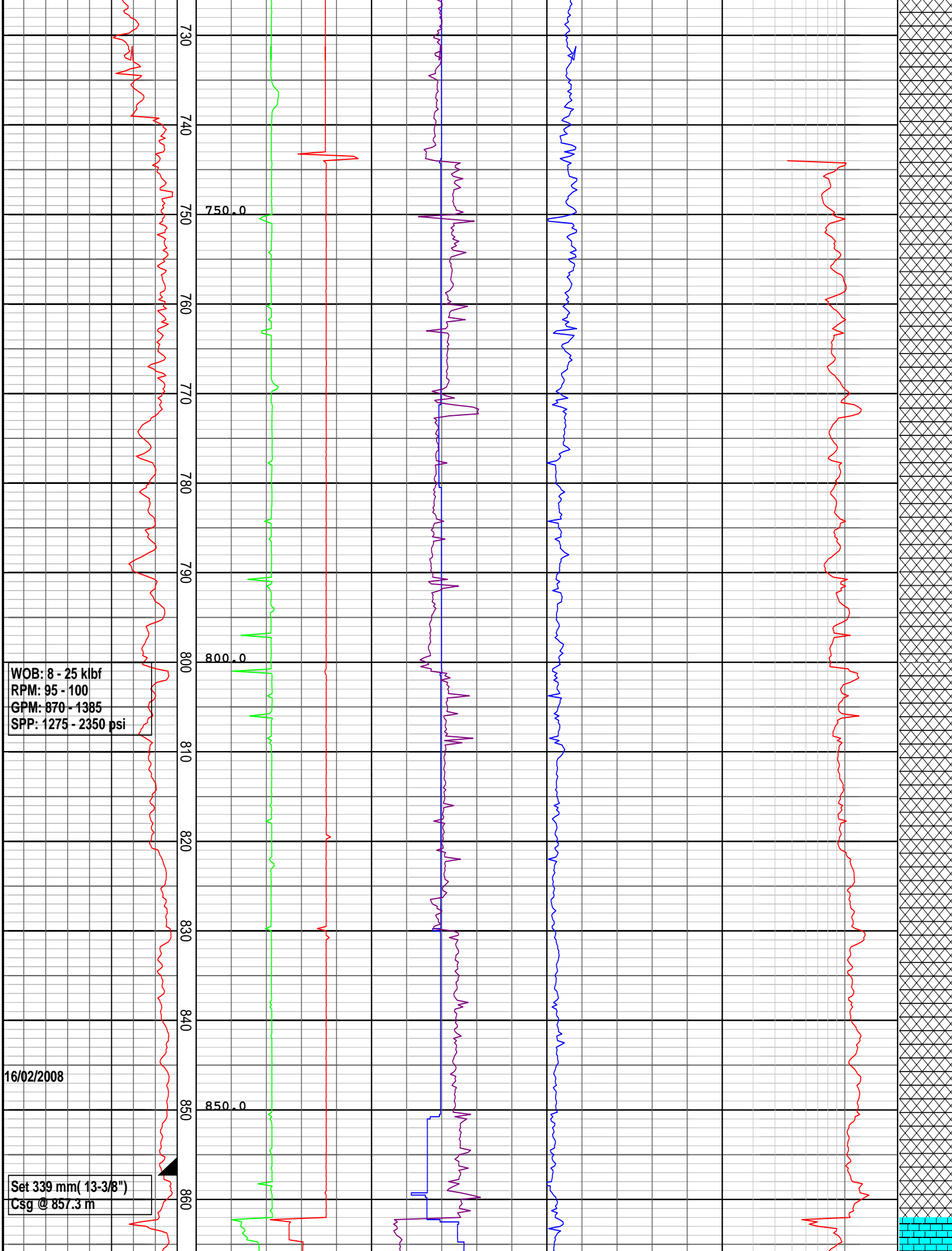




WOB: 9 - 35 kJbf
RPM: 50 - 105
GPM: 930 - 1110
SPP: 930 - 2015 psi

WOB: 3 - 20 kJbf
RPM: 100 - 101
GPM: 1105 - 1110
SPP: 1755 - 2015 psi





WOB: 8 - 25 kJbf
RPM: 95 - 100
GPM: 870 - 1385
SPP: 1275 - 2350 psi

16/02/2008

Set 339 mm (13-3/8")
Csg @ 857.3 m

730
740
750
760
770
780
790
800
810
820
830
840
850
860

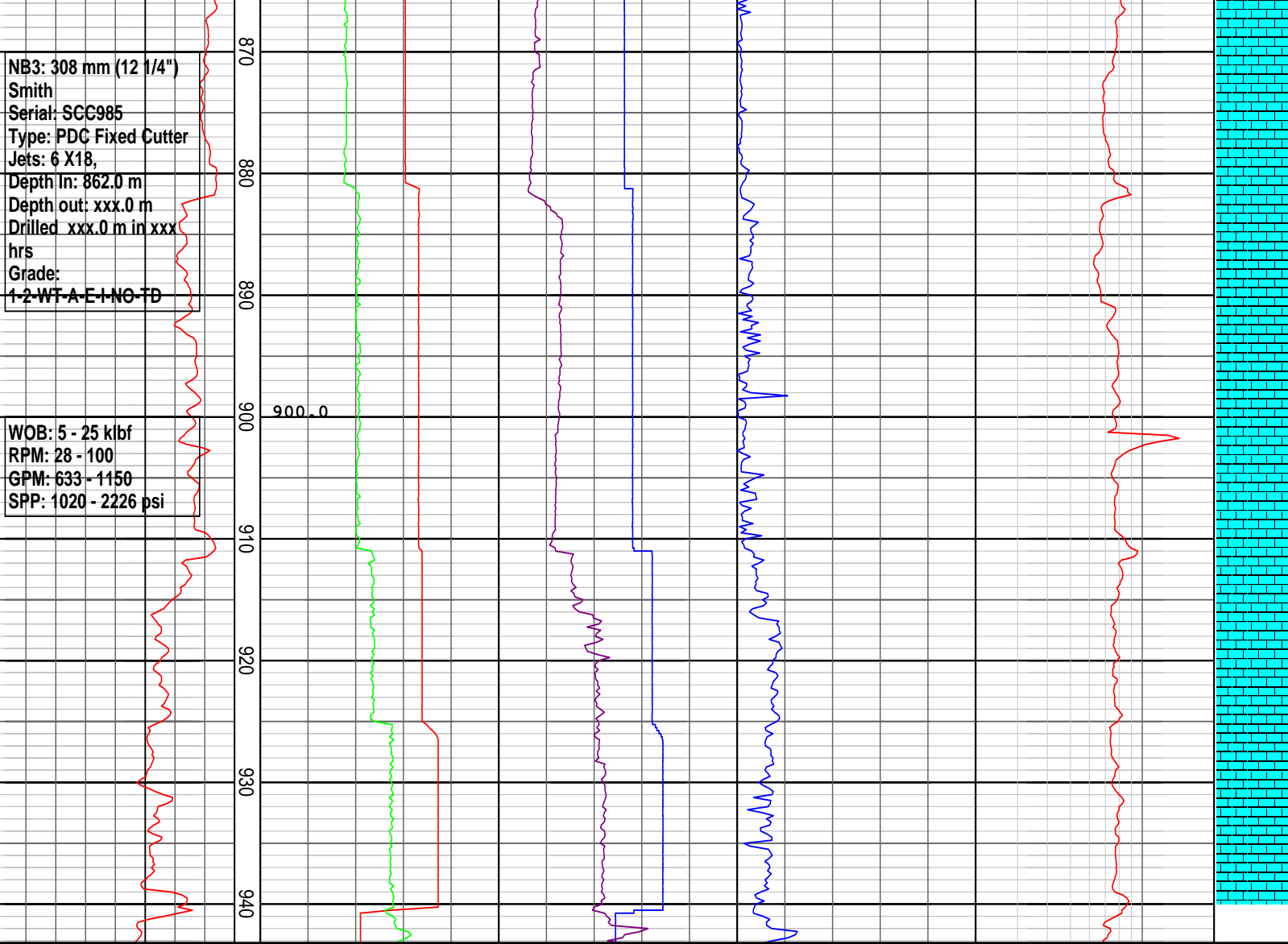
750.0

800.0

850.0

NB3: 308 mm (12 1/4")
Smith
Serial: SCC985
Type: PDC Fixed Cutter
Jets: 6 X18,
Depth In: 862.0 m
Depth out: xxx.0 m
Drilled xxx.0 m in xxx
hrs
Grade:
1-2-WT-A-E-I-NO-TD

WOB: 5 - 25 klbf
RPM: 28 - 100
GPM: 633 - 1150
SPP: 1020 - 2226 psi



DRILLING DATA PLOT

ROP (m/hr) 200 175 150 125 100 75 50 25	FLOW IN (gpm) 300 600 900 1200 1500 STANDPIPE (psi) 1000 2000 3000 4000 5000 VDEPTH	RPM Avg 50 100 150 200 250 WOB Avg (klbs) 8 16 24 32 40	TORQUE Avg (kft-lb) 5 10 15 20 25	DXC 0.2 2	INTERPRETED LITHOLOGY
---	--	--	---	-----------------------	--------------------------